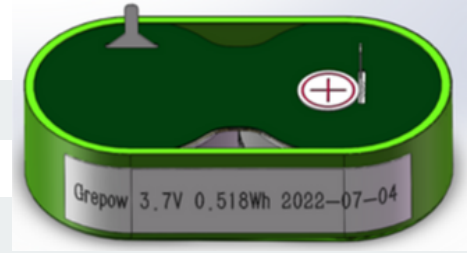


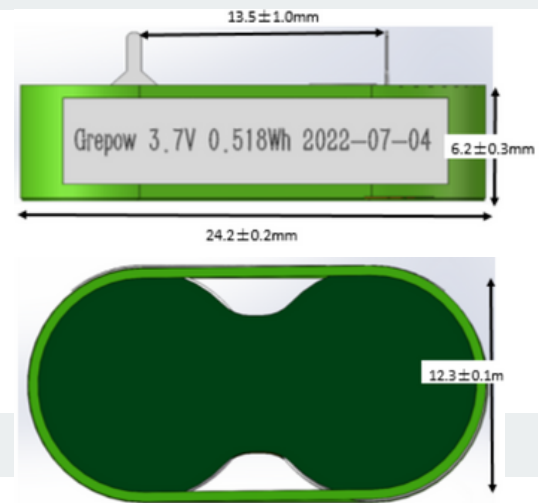
Battery Specifications



Model No.:	GRP1254R1-1S2P
Chemistry:	LiCoO2
Nominal Voltage [V]:	3.70
Nominal Capacity [mAh]:	140 (at 0.2C from 4.2V to 3.0V at 25°C)
Minimum Capacity [mAh]:	135 (at 0.2C from 4.2V to 3.0V at 25°C)
Watt Hour [Wh]:	0.518Wh
Internal Impedance [Ω]:	< 0.15 @1kHz

Dimensions (without Tags)

Diameter [mm]:	24.2±0.2
Height [mm]:	6.2±0.3
Weight. approx [g]:	3.9±0.2



Charging Specifications

Max Voltage [V]:	4.20
Normal Charging Current [mA]:	70mA / 0.5C / 3hr
Max Charging Current [mA]:	420mA / 3C / 1.1hr
Charging Temperature [°C]:	0 to 45

Discharging Specifications

Cut Off Voltage [V]:	3.0
Max. Discharging Current [mA]:	280 mA (Continuous)
Discharging Temperature [°C]:	-20 to 60

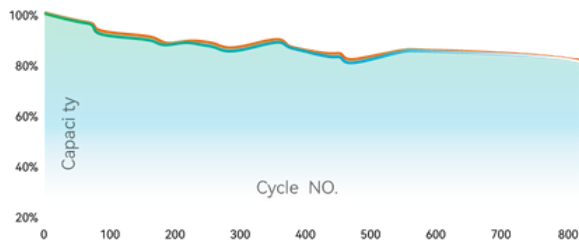
Others

Storage Temperature [°C]	1 Year	at -20 to 20°C	> 90%
Capacity Recovery Rate [%]	3 Months	at -20 to 45°C	> 90%
	1 Month	at -20 to 60°C	> 85%
Cycle Life 1C/1C, 20°C [Cycles]	> 500 (>80% of initial capacity)		
Safety	UN 38.3 passed, IEC 62133 passed		

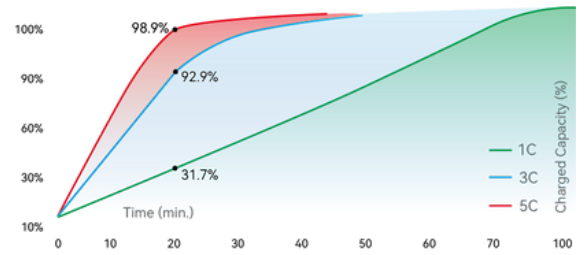
** Information and contents on this data sheet are for reference purposes only. This sheet does not constitute any warranty or representation and are subject to change without notice. For the most up to date information and details, please contact your Grepow representative.

Cycle Test

1C charging/discharge, ≥80% of initial capacity after 800 cycles



Charging Test

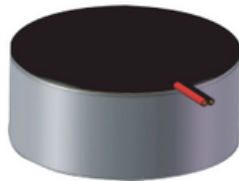


Battery Connection Solutions (For Button Cell battery)

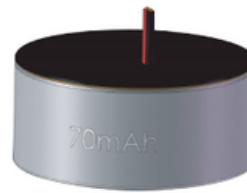
Hardwire Solutions



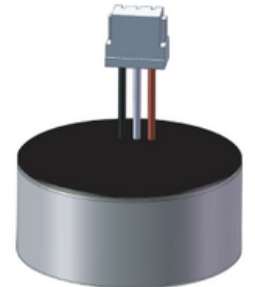
#1



#2

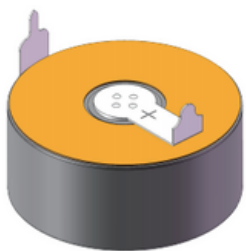


#3

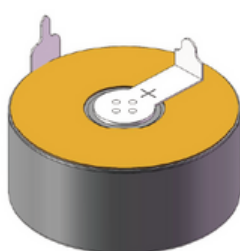


#4

Tab Solutions



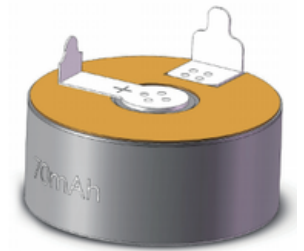
#1



#2



#3



#4

China

Shenzhen Grepow
Battery Co. Ltd.

+86-755-88376378

Unite State

Grepow INC.

+1-925-364-7166

Germany

Genspow Ltd.

+49-(0)218-25700755

Official Website:

www.grepow.com

Email:

Business: info@grepow.com
Media/Marketing: pr@grepow.com